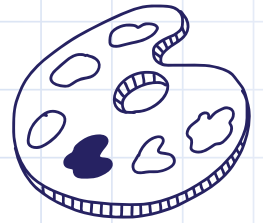
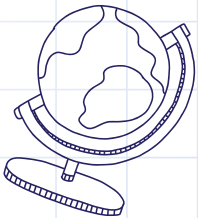


WELCOME
to



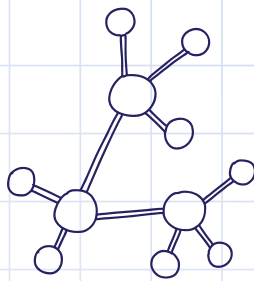
SECOND
SEMESTER



2017



Get ready for rush!



PHILIPS



DJ Style Headphones by Philips

- 32mm speaker drivers for powerful and dynamic sound
- Closed type acoustics provide good sound isolation
- Soft breathable ear cushions for long listening sessions
- Adjustable earshells and headband adapts to fit most heads
- Compact, fold flat design for easy storage
- 1.2m cable for freedom of music enjoyment on-the-go

COLOR	DSC#	VENDOR#
Black	73439	SHL3060BK
Red	73440	SHL3060RD
Black	73441	SHL3160BK

ESRP \$43.47



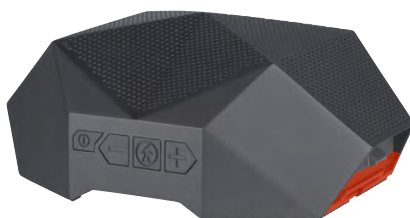
Recharge and Repeat



KODIAK MINI 2.0 USB Power Bank

Are recharges your second love? Impervious to the elements and lights your way, the Kodiak Mini 2.0 is a 2600mAh universal USB powerbank with a flashlight, what's not to love? 4 LED lights provide a bright 65 lumen flashlight and fuel gauge. Fully waterproof to IPX7 standard (IPX6 with lid off). Slim and flat polymer cell.

COLOR	DSC#	VENDOR#	
Blue	100744	OT2700-EB	
Black	100743	OT2700-B	ESRP \$31.00



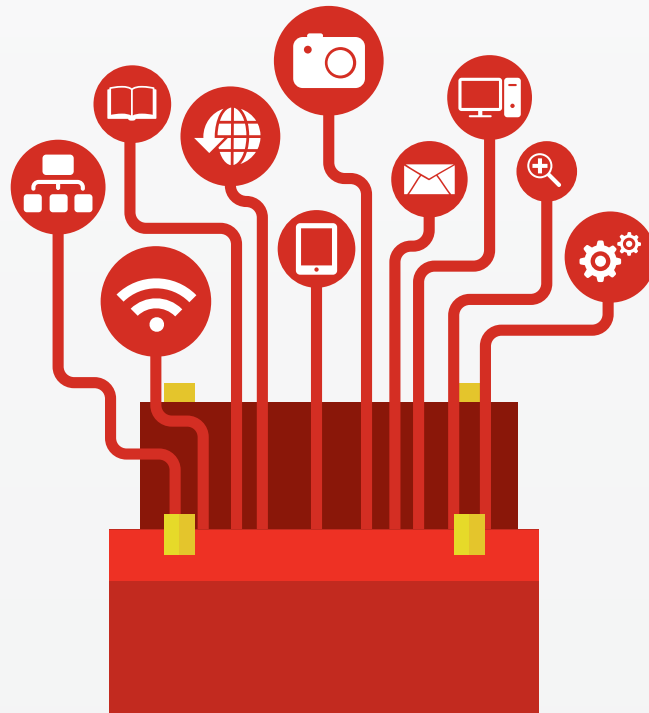
TURTLE SHELL 3.0 Bluetooth Speaker

Bluetooth 4.0 wireless audio with battery fuel gauge & voice prompts. Rechargeable lithium-ion battery for 20 hour playtime. Powerbank for recharging other devices (5200mAh). Dual orientation: omni-directional & directional sound with a fully waterproof to IPX7 standard and it floats! Wireless stereo with daisy chaining capabilities. Mount it anywhere via standard camera thread, carabiner, or straps.

COLOR	DSC#	VENDOR#	
Gray	100730	OT2800-GR	
Red	100731	OT2800-R	ESRP \$124.18



Visit the Marketing Toolbox at dstewart.com!



Featuring:

- The Douglas Stewart Company Retail Publications and Product Guides
- Marketing Assets
- Vendor Information Centers
- Merchandising Kits and Displays
- Trainings and Webinars
- And Additional Resources!

Do you need log in credentials?

Please set up a new account via dstewartcanada.com or contact us at custserv@dstewart.com and start searching today!



AQUA FLOATING & WATERPROOF PORTABLE BLUETOOTH SPEAKER

FEATURES

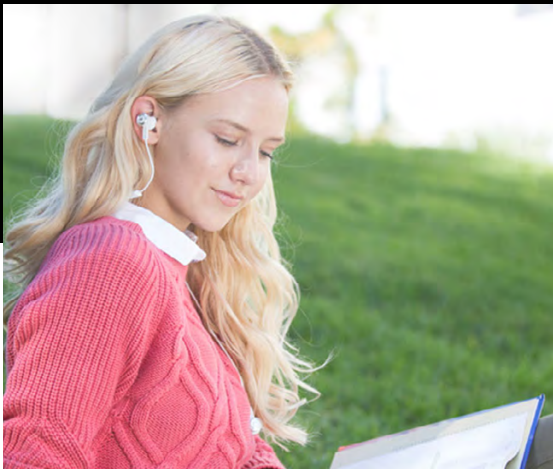
- » 10 hrs. playtime
- » Bluetooth 3.0 with a range of 33 feet
- » 3.5mm auxiliary input
- » Included hanging/carrying strap
- » Built-in microphone for hands-free calling
- » IPX-7 Rated waterproof & shock resistant design
- » Designed to float on water

COLOR	DSC#	VENDOR#
Gray	100671	AQUAGRY
White	100727	AQUAWHT

ESRP \$161.45

nylene

DISCOVER THE NYNE AQUA




MONSTER®

PURE MONSTER SOUND®

MONSTER CLARITY HD HIGH DEFINITION IN-EAR HEADPHONES

- » Advanced construction with reinforcement at critical stress points
- » Ergonomically designed, with multiple ear tips for a better fit
- » Won't fall out of ears like other earbuds
- » Top sound quality at an incredible value
- » Superior noise isolation
- » ControlTalk Universal for clearer calls, simple music controls
- » Flat, tangle-resistant cable
- » Extremely lightweight
- » Low-profile right angle connector



COLOR	DSC#	VENDOR#
Black	76400	MH CLY IE BK CU WW
Green	76401	MH CLY IE N-GR CU WW
White	76402	MH CLY IE WH CU WW
Pink	76403	MH CLY IE N-PNK CU WW

ESRP \$49.63

MONSTER CLARITY HD IN-EAR BLUETOOTH HEADPHONES

- » Premium wireless Bluetooth sound quality at an incredible value
- » Superior noise isolation
- » In-line mic for clearer phone calls and music control
- » Extremely lightweight
- » Innovative battery design for 8+ hours of listening
- » Advanced construction with reinforcement at critical stress points
- » Ergonomically designed, with multiple ear tips for a better fit
- » Won't fall out of ears like other earbuds



COLOR	DSC#	VENDOR#
White	76405	MH CLY IE N-WH BT WW**
Black	76404	MH CLY IE N-BK BT WW**

ESRP \$99.33

Lights. Camera. ACTIVEON.



Key Features



Super Wide View



6-elements Aspherical Glass F/2.4 lens



Full HD 1080P 30fps



Built in WiFi



2" Built-in LCD



Longer Battery 120min



70g



CX

DSC# 96353

VENDOR# CCA10W

ESRP \$99.38

CX Gold



DSC# 96352

VENDOR# GCA10W

ESRP \$186.35

Key Features



F/2.4 Super Wide Lens



16MP Pro-grade CMOS sensor



Full HD 1080P 60fps



Built in WiFi



Digital Image Stabilization



2" Built-in LCD touch screen



Quick REC



Program Mode



4 Step FOV



Automatic Timelapse Video



Contact your Account Manager at 800-279-2795 to place your order of ACTIVEON this season!

NOT VODKA®

Join the Movement!

Insulated Water Bottle

Users will take their beverage with them everywhere knowing they're giving generously to help the global water crisis with this double wall, vacuum insulated and copper lined bottle. One dollar is donated to a unique and different non-profit dedicated to efforts around water for every one bottle bought. Keeps drinks cold for 30 plus hours. BPA and BPS free, and non-toxic.

Color	DSC#	Vendor#	Min	ESRP
Glossy Blue	104591	NV-S25oz-BL1	1	\$39.76
Glossy Red	104592	NV-S25oz-R1	1	\$39.76
Glossy White	104590	NV-S25oz-W1	1	\$39.76
Matte Black	104589	NV-S25oz-B1	1	\$39.76
Neon Orange	104595	NV-S25oz-O1	1	\$39.76
Neon Pink	104594	NV-S25oz-P1	1	\$39.76
Sea Foam	104593	NV-S25oz-SF1	1	\$39.76

Start the Semester with Style



Collins Sleeve

The Collins Laptop Sleeve is custom-fit, ultra-padded and perfect for slipping into a larger bag. Newly re-designed to include sleek metal accents and a fresh new pinstripe lining.

Description	DSC#	Vendor#	Min	ESRP
Graphite, 11in	104805	1959	1	\$49.63
Indigo Chambray, 11in	104804	1958	1	\$49.63
Graphite, 12in	104809	1963	1	\$49.63
Indigo Chambray, 12in	104808	1962	1	\$49.63
Graphite, 13in	104807	1961	1	\$49.63
Indigo Chambray, 13in	104806	1960	1	\$49.63

Collins Sleeve Plus for Surface Pro 4

The Collins Sleeve Plus is custom-fit for Surface Pro 4 and is perfectly sized for slipping inside of a larger bag while on the go. Equipped with dedicated pockets for Surface Pen and Surface Mouse, this sleeve is the ideal carry-all for the Surface power user.

Description	DSC#	Vendor#	Min	ESRP
Cloud, 14in	104814	1972	1	\$62.06
Indigo Chambray, 14in	104813	1971	1	\$62.06



The Simplest TV Mount Ever!



What is the HUK™ bracket?

The HUK TV Mount is a two bracket fixed mounting system designed with ease of use, limited space, and portability in mind. It is perfect for any small space such as dorm rooms, garages, apartments, or simply any place they would enjoy watching TV. The HUK TV Mount is unlike any other TV mount on the market since it does not require damaging drilling into walls. HUK is perfect for lofted beds, railing, ladders, bars, and more. HUK is manufactured in America using the highest quality aircraft-grade aluminum anodized to military specifications. VESA compliant for TVs 12" - 42".



DSC# 103659 | Vendor# HUK00DS
Min 4 | ESRP \$43.47



Three Cheers for a Cleaner Dorm Room!

Laptop Lap Desk

Solid MDF surface with built in handle for portability and removable padded cushion. Light and portable, great for bed or sofa. Ideal barrier for laptop heat.

DSC# 74722 | Vendor# TBL-03539
Min 4 | ESRP \$26.99

Mesh Pop-Up Hamper

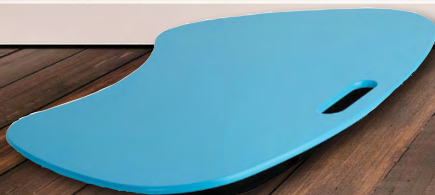
This mesh hamper pops up to open, and easily compresses flat when not in use. The mesh material provides ventilation, allowing worn clothes to breathe, reducing unpleasant odors and mildew. Useful carrying handles make transporting clothes to the laundry room, laundromat, or dry cleaner a breeze.

DSC# 22712 | Vendor# HMP-01127
Min 10 | ESRP \$27.32

Plastic Swivel Tubular Hanger

A versatile, heavyweight plastic clothes hanger, perfect for all garments in a 5-piece value pack. Integrated accessory hooks keep garments with spaghetti straps in place, and hang scarves or belts nicely. Features a unique rod hook that swivels 360 degrees to hang items easily on any closet rod, towel bar, or over a standard size door.

DSC# 22740 | Vendor# HNG-01362
Min 6 | ESRP \$6.20



Drink [Environmentally] Responsibly with Aladdin



One-Hand Water Bottle

Stylish and reusable, the new leak-proof push button lid is easier to push; just press to sip and release to close. Easy-grab lanyard, made with Eastman Tritan, dishwasher safe, and BPA free. Assorted colors include: Jam, Sea, and Tomato.

DSC# 75619 | Vendor# 10-01914-001
Min 6 | ESRP \$16.14



Stainless Steel Vacuum Mug

The intuitive leak-proof flip lid is perfect for everyday on-the-go use. Single-serve coffee machine compatible and car-cup friendly. Vacuum insulated to keep drinks hot for 4 hours or cold for 24 hours. Dishwasher safe and BPA free. Assorted colors include: Berry, Fern, Marina, and Tomato.

DSC# 75624 | Vendor# 10-01919-001
Min 6 | ESRP \$24.84

Untangle your cords with PowerCube



The PowerCube can be used standalone, or to expand the PowerCube Extended or Extended USB, providing five additional outlets.

PowerCube Original with Surge Protection

DSC# 103944 | Vendor# 4120GN/USORPC
Min 1 | ESRP \$18.57

PowerCube Extended with Surge Protection

DSC# 103946 | Vendor# 4320RD/USORPC
Min 1 | ESRP \$24.79



The World's Most Advanced Bluetooth® Item Finder

XY3 Smart Item Tracker

The XY Personal Item Finder combines cutting-edge Bluetooth® LE technology with the XY Find It mobile app to help keep tabs on any personal items that matter. Using the XY Find It app on an iOS or Android device, users can be notified when their Finder goes out of range, see how near the finder, display the last known location on a map, and connect to the XY Lost and Found Community.

Color	DSC#	Vendor#	Min	ESRP
Silver	100009	XYBT03-SLVR-01	1	\$31.05
Ruby	100012	XYBT03-RUBY-01	1	\$31.05



1247.10.2016

New ways to save on OnHand!



Receive a **FREE Merchandising Support Kit** when you purchase **The People's Pack**.

OR

Get **5% Off (\$183.17)** and a **FREE Merchandising Support Kit** when you purchase **The Leader of the Packs**.

What's in the FREE Merchandising Support Kit?

The OnHand Merchandising Support Kit helps you to increase the visibility of your Charging Station and helps to bring attention to OnHand products in your store. The Merchandising Support Kit contains 4 posters, and 6 raffle prizes including 3 Shower Speakers and 3 Slim Battery Packs (\$145 value).

Description	DSC#	Vendor#	ESRP
The People's Pack, 162 Ct	95380	PPL-CSMOH	\$3,715.22
The Leader of the Packs, 258 Ct	95381	LEAD-CSMOH	\$6,059.66
Merchandising Support Kit	95423	MSK-MKTOH	
Free with purchase of The People's Pack and The Leader of the Packs			

Valid on all orders placed from **October 1, 2016 – December 31, 2016**.

Contact your **Douglas Stewart Account Manager** at **800-279-2795** for more information.



Dimensions: 2ft x 3ft x 7ft