

A young child with short brown hair has colorful paint (yellow, green, purple) smeared on their face. They are covering their mouth with both hands, appearing to be laughing or crying. The background is a stylized world map with vibrant colors like purple, green, and blue. In the bottom right corner, there are several thin, white, curved lines that create a sense of motion or a digital interface.

tover[®]

Welcome!

Tovertafel Webinar

Hanna Groniger & Rebecca Strange

Agenda

- **Introduce Tover & the Tovertafel**
- **Overview of Tovertafel for Special Education**
- **Demo**
- **Q&A**





tover[®]

About Tover and the Tovertafel

Tovertafel for Special Education



The Tovertafel

an all-in-one interactive gaming system for social-emotional learning



Versatile Play Options:

tabletop, floor, wheelchair tray, floor mats, sensory tables, and more



Multi-Level Gameplay and Layered Games:

encourages children of different cognitive levels to play together



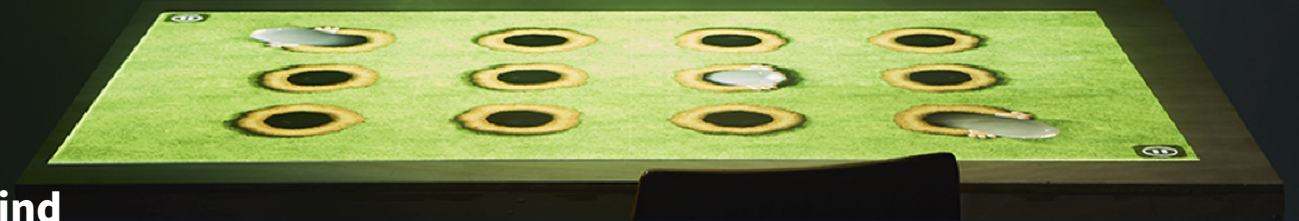
Co-Design:

games rigorously designed and tested with education experts and children around the world



Click-and-Ready System:

simple setup and mobility with safety in mind



Specifications

What comes in the box:

- **Tovertafel**
 - including 2-year warranty and Open Play & Learn subscription
- **2 remote controls and batteries (AAA)**
- **2 Click-and-Ready hooks and hanging materials**
- **Power cable and plug**
- **Manual**
- **8 Game Tiles**

What is found online (MyTover):

- **Installation videos**
- **Play tips and guides**
- **Further game information**
- **Game alignments**
- **Tracking and observation tools**





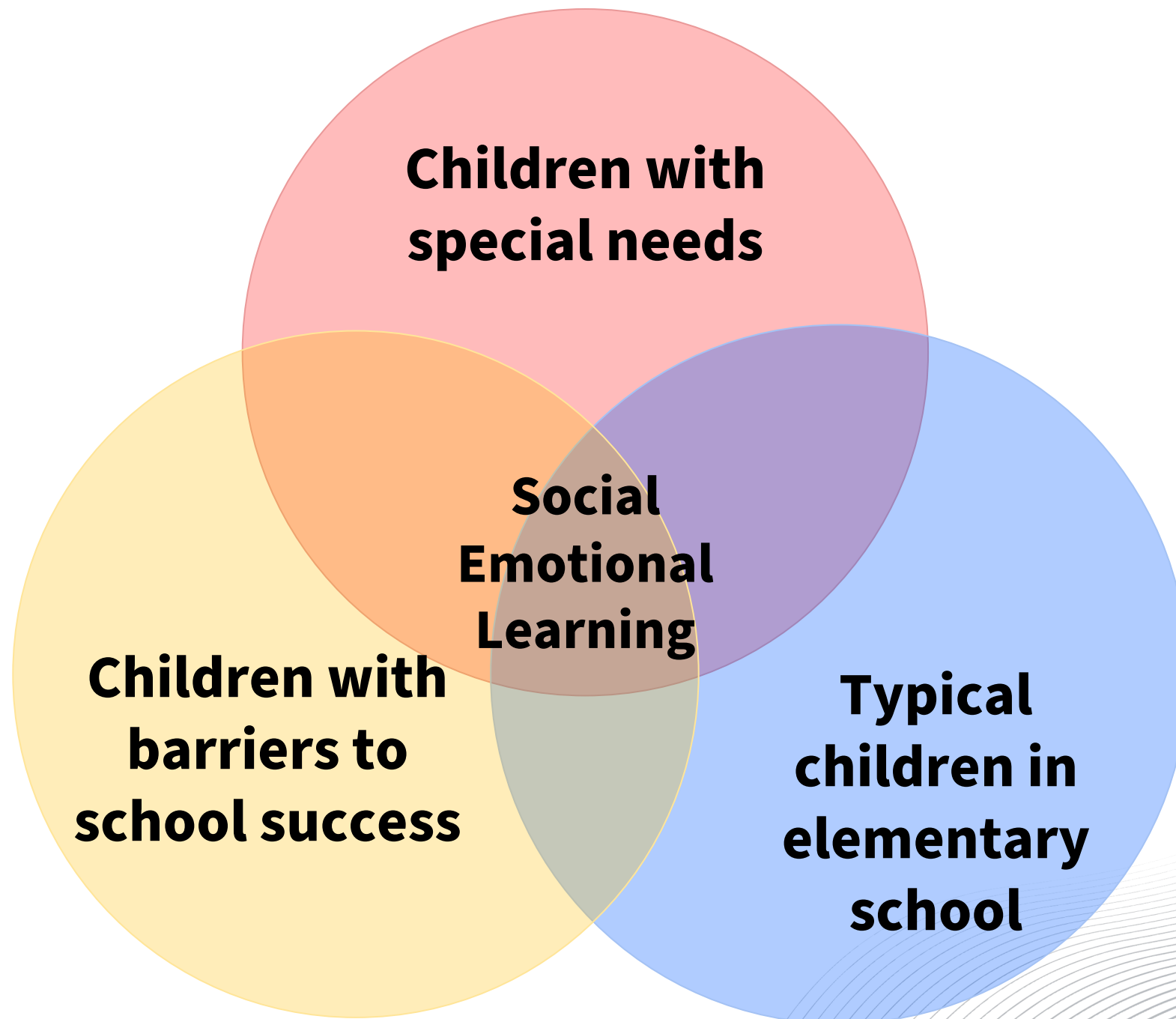
tover[®]

Tovertafel Overview: Special Education

Who are our games for?

- **Children with special needs**
 - Neurodiversity
 - Intellectual and learning disabilities
 - Physical disabilities
- **Children with barriers to school success**
 - ESL students
 - Students experiencing ACEs
- **Typically developing children in elementary school**





**Children with
special needs**

**Social
Emotional
Learning**

**Children with
barriers to
school success**

**Typical
children in
elementary
school**

Target Group: Cognitive and Developmental Range



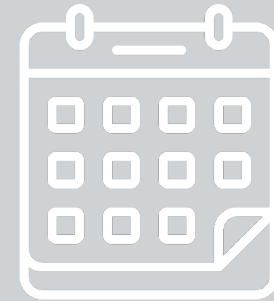
Children with Special Needs

Cognitive Age

**2 – 8
years**

Calendar Age

**3 – 16
years**



Typically Developing Children

Calendar Age

**2 – 8
years**

How is the Tovertafel used for education?

- **Who is using the Tovertafel:**
 - Teachers
 - OTs & PTs
 - SLPs
 - Caregivers and volunteers
 - Activity coordinators
- **Locations in schools:**
 - Classrooms (mainstream and special education)
 - Resource, therapist, & sensory rooms
 - Hallways, libraries, & other common spaces
- **How to play:**
 - On the table, floor, wheelchair tray, floor mat, & sensory table
 - With hands or other body parts
 - With paddles, balls, toys, or adaptive/assistive devices
 - One-on-one or in small groups



Tovertafel Alignments

Social Emotional Learning (CASEL)

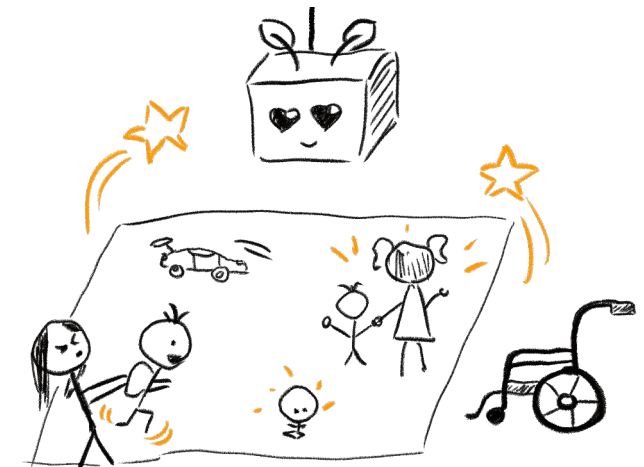
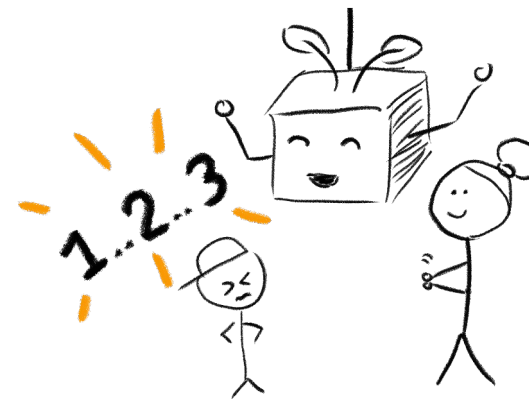
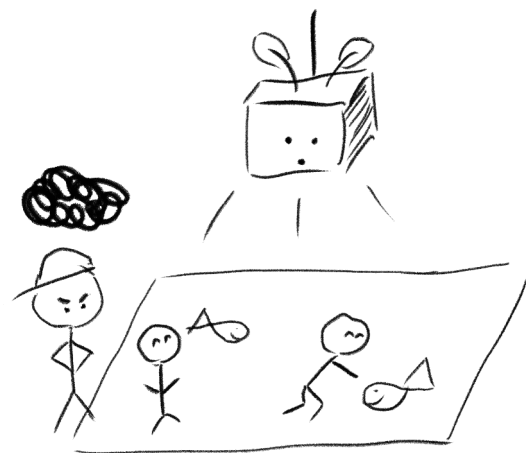
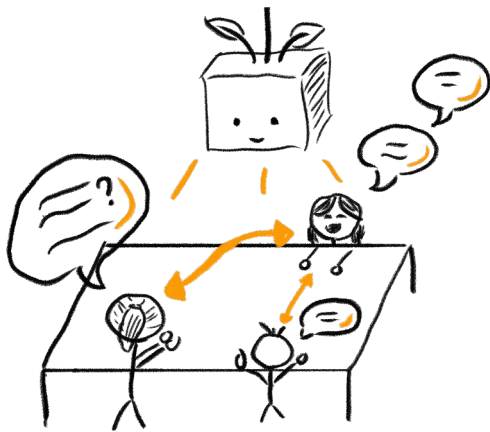
- Self awareness
- Social awareness
- Self management
- Relationship skills
- Responsible decision-making

US Learning Standards (CCSS)

- Kindergarten – 3rd Grade
- English Language Arts (ELA)
- Mathematics

Zones of Regulation (*coming soon!*)

- Emotional regulation by Zone
- Games for Zone-based skill acquisition and practice





tover[®]

Tovertafel Demonstration



tover[®]

Thanks for attending!

Any questions?