

CONSUMER ELECTRONIC TECHNOLOGY GUIDE

2022 Summer Edition



**SPORTING
GOODS**

**AUDIO &
HEADPHONES**

**CONNECTIVITY
& ACCESSORIES**

HARDWARE



Who is it for?

- » Students & faculty
- » Commuters



Why it fits

- » Perfect for students that are within a few miles of campus.
- » Unique product



Why it's great

- » Premium technology
- » Active social media presence
- » Innovative design



How it compares

- » Reliable
- » Safe UL-SGS Certified
- » Every purchase is covered by a 100% Money Back Guarantee



THE FUTURE IS ELECTRIC

Make the commute more sustainable

Fun & Convenient

Time for a whole new level of scooter experience. With 3-speed settings, this scooter boasts a powerful 350W motor that lets it reach 15.5 mph with ease. Use it to commute to work or for a relaxing joyride.

Sturdy, Lightweight, & Portable

The strong aluminum frame and thick, durable tires give it a maximum load capacity of 265 lbs. It also takes up little space when folded and can be carried with one hand, making it one of the most convenient transport options available.

Ride for longer

The 37V 7.5Ah lithium-ion battery gives it an impressive range of up to 20 miles under ideal road conditions and thanks to the 4 LED battery strength indicator and dashboard, it's easy to check how much battery life you have left or how fast you're going.

Safety Prioritized

The two lamps—front and rear—ensures visibility while riding at night and the bell adds an extra layer of safety. Stop on a dime thanks to the front bar electric hand brake and a rear disc brake.

SONY[®]

TUNE OUT THE WORLD

Turn down the world's noise with the long-lasting noise cancellation performance of Sony. Perfect for a life on the go, these headphones deliver a remarkable, noise-free audio experience.

Noise Canceling Headphones

Comfort

Pressure-relieving ear cushions provide long-term comfort

Portability

The swiveling earcups fold into a compact form for portability

Noise Canceling

Sony signal-processing technology reduces ambient noise from the office, airplanes, and trains by up to 95 percent.

Wireless Noise Canceling Headphones

Long Lasting

Up to 30 hours of battery life with quick charging capabilities

New Features

Enjoy an enhanced Smart Listening feature set

Hands-Free

Carry conversations hands-free with speak-to-chat



Who is it for?

- » Students & faculty
- » Audiophiles



Why it fits

- » Industry-leading noise cancellation
- » State of the art technology



Why it's great

- » Household name
- » High-quality audio products



How it compares

- » Sony takes a leading role in the development of international accessibility standards.
- » Sony focuses on diversity and sustainability efforts.



Who is it for?

- » Students & faculty
- » Athletes



Why it fits

- » Patented 7th generation bone conduction technology
- » Open ear design perfect for athletes or students who exercise



Why it's great

- » Lightweight (only 29g)
- » IP55 water and sweat resistant
- » 6-Hour battery life



How it compares

- » Cost-effective pricing
- » 2-year warranty
- » Reddot winner 2021



STAY OPEN WHILE ON THE MOVE

OpenMove Wireless Headphones

OpenMove was created with versatility in mind and designed for everyday use, bringing the best-in-class bone conduction technology, signature open-ear design, and comfortable, safe listening at a cost-effective price.

Safe, Comfortable Listening

OpenMove leaves their ears completely open for total awareness of surroundings. OpenMove has a lightweight design and snug fit to ensure all-day comfort.

Affordable Price

OpenMove brings quality, water-resistant headphones at a college-student's budget. Students also love 6-hours of battery life available on each charge.

Quality Sound

Powered by patented 7th generation bone conduction and PremiumPitch 2.0™ for precise and balanced audio, optimal volume, and rich bass.



urbanista

SUSTAINABLE & SELF-CHARGING

Los Angeles Solar-Powered headphones

Welcome to the dawn of a new era with Urbanista Los Angeles, the world's first self-charging wireless headphones powered by Powerfoyle™ solar cell material. Give students infinite playtime and infinite audio immersion.

Sustainable Self-Charging

Using green technology, Los Angeles transforms all forms of light into clean, endless energy.

Noise Canceling & Ambient Mode

Advanced hybrid Active Noise Cancelling instantly reduces unwanted background noise, while Ambient Sound Mode allows in important surrounding sounds.

Freedom & Control

The on-ear detection feature pauses audio when headphones are removed and restarts it when they are put back in place.



Who is it for?

- » Students and faculty
- » Commuters



Why it fits

- » Perfect for students that are within a few miles of campus.
- » Unique product



Why it's great

- » Premium technology
- » Active social media presence
- » Innovative design



How it compares

- » Reliable
- » Safe UL-SGS Certified
- » Every purchase is covered by a 100% Money Back Guarantee



Who is it for?

» Students & faculty



Why it fits

» Low price point



Why it's great

» Built-in music controls



How it compares

- » OnHand was founded in a dorm room
- » High-quality, reliable tech accessories

onHand[®]

COST-EFFECTIVE EARBUDS

OnHand Wired Earbuds

Bring their music wherever they go. OnHand has built-in music controls so they can easily change the volume or skip songs. The low price point is perfect for college students who want an easy, reliable earbud solution.

The JBL logo is displayed in white, bold, sans-serif font against a dark background.

BIG SOUND IN A PORTABLE SIZE

JBL Charge 5

Take the amazing power of JBL Pro Sound on-the-go. The JBL Charge 5 has an optimized long excursion driver, a separate tweeter, and dual JBL bass radiators, all delivering impressively rich and clear audio. Get that big room sound, even when outdoors.

Charge 5 Features

- 20 hours of playtime
- IP67 waterproof and dustproof
- Wireless Bluetooth streaming
- PartyBoost compatible (can pair two speakers for stereo sound)
- Built-in power bank for convenient charging



Who is it for?

- » On-the-go listeners
- » Audiophiles
- » Convenience shoppers
- » Athletes



Why it fits

- » Full audio line coverage
- » Industry leaders in audio since 1946
- » State of the art technology



Why it's great

- » Household name
- » High-quality audio products
- » Product for every user



How it compares

- » JBL has received awards from the Grammys, CES, iFA, redden, & more
- » The official sound of the NBA
- » Featured in The Verge, Tech Radar, CNET, PC Mag, & more



Who is it for?

- » Students & faculty
- » Ethical Shoppers
- » Fashionistas



Why it fits

- » Popular among 18-24 demographic
- » Perfect for self-expression



Why it's great

- » Customizable designs
- » Easy to remove, install, or reposition at any time
- » Provides one-handed phone grip



How it compares

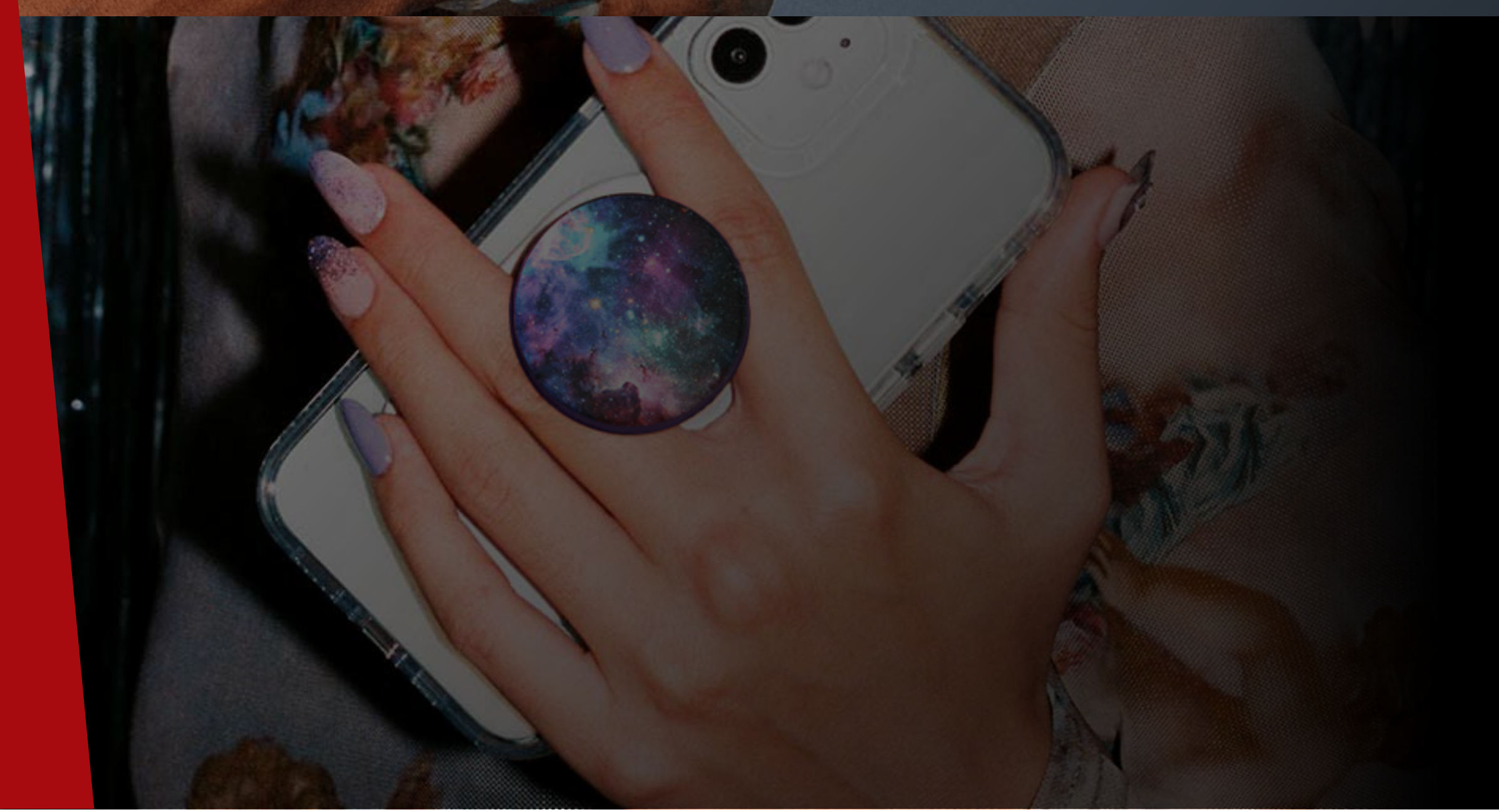
- » Popular with celebrities like Gigi Hadid, Jared Leto, Michael Phelps, Nicole Williams, & Serena Williams.
- » Supports leading nonprofit organizations focusing on social and environmental impact through product collaborations & partnerships.

POPSOCKETS

EASY ON, EASY OFF

MagSafe PopGrips

MagSafe PopGrips securely attach to MagSafe-compatible cases for maximum grip and stand utility, while simply sliding off when needed for MagSafe charging.





LBT
ULTRA FAST[®]

STAY IN THE FAST LANE

Dual-port chargers

Experience fast charging anywhere with Libratel's dual-port chargers. With Power Delivery charging technology, students will get a faster, more efficient charge wherever they are. Libratel charges mobile devices at the higher speed students need.



Who is it for?

- » Students & faculty



Why it fits

- » Light and compact
- » Low price point



Why it's great

- » Dual port can charge multiple devices
- » Fast & efficient charging technology



How it compares

- » Sleek, compact designs



GUARANTEED SELLERS FOR BACK-TO-SCHOOL



Who is it for?

- » Students & faculty
- » Budget-conscious students



Why it fits

- » Runs commonly used software in the educational channel
- » Ultra-thin & lightweight



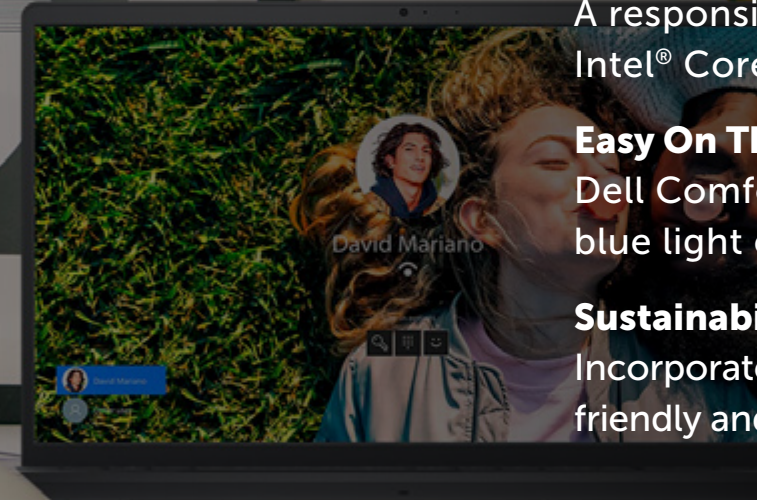
Why it's great

- » Operates Windows 11
- » 1-year hardware warranty
- » High-quality screen, camera, & speakers



How it compares

- » Household name
- » State-of-the-art craftsmanship, innovation, & connectivity



Dell Inspiron 15 3511

The Speed They Need

A responsive yet quiet performance, featuring the latest 11th generation Intel® Core™ processor options with PCIe SSD options.

Easy On Their Eyes

Dell ComfortView Low Blue Light Software solutions help reduce harmful blue light emissions and optimize eye comfort over extended viewing.

Sustainability They Care About

Incorporates the use of post-consumer recycled plastics, environmentally friendly and sustainable, and helps keep plastics out of landfills.

Dell G15 Gaming Laptop

Stay Cool

Dual air-intake, four side vents, and rear vents maximize the airflow over the copper pipes for optimal cooling and heat dissipation.

Guaranteed Power

With up to 11th Gen Intel® Core™ processors, they can revel in powerful performance without interrupting their gaming, streaming, or videos.

More Storage

Has faster boot-ups and more storage space thanks to optional dual drive configurations including SSDs.

